



**Flat 4, 4-4 Charlotte Street**

Leamington Spa **CV31 3EB**

Guide Price £130,000

# Flat 4, 4-4 Charlotte Street

A first floor, one bedroom apartment with communal parking located in Royal Leamington Spa within easy access of the town centre and train station. The accommodation comprises communal entrance hall, private inner hall with security intercom which leads to an open plan lounge/kitchen with feature fireplace. Also from the inner hallway there is a double bedroom and en-suite shower room.

Call us today for more information or to book in an internal viewing.

## LOCATION

Charlotte Street lies a short distance south of central Leamington Spa being within walking distance of the full range of town centre amenities including shops and independent retailers, restaurants, bars, parks and artisan coffee shops. Leamington Spa railway station is also within walking distance providing regular commuter rail links to London and Birmingham amongst other destinations, there also being good local road links available to neighbouring towns and centres and the Midland motorway network.

## COMMUNAL ENTRANCE

Having stairs leading to the first floor landing and front door.

## ENTRANCE TO APARTMENT

Having a gas central heating radiator and access to adjacent rooms.

## OPEN PLAN LIVING ACCOMMODATION

5.12m x 4.32m (16'9" x 14'2")

A light and spacious area which in brief has space for lounge / dining room furniture, glazed windows to the side and front

elevation and gas central heating radiator. The kitchen in brief has work top surfaces, cupboards, a four ring gas hob, oven unit, extractor fan, part tiled walls, built in Fridge Freezer and space for a washing machine / washer dryer. Also having loft access for storage.

## BEDROOM

4.31m x 2.43m (14'1" x 7'11")

Having a gas central heating radiator, glazed window to the front elevation, space for bedroom furniture and a door to;

## SHOWER ROOM

2.26m 0.83m (7'4" 2'8")

Having a low level W/C, sink unit, shower cubicle and a wall mounted combination boiler.

## LEASE INFORMATION

The vendor has informed us that there are around 144 years remaining on the lease and the service charge is £30 per month and ground rent is £50 per annum. It is the buyer's responsibility to check this via their chosen solicitors once a sale is progressing.

## DIRECTIONS

Postcode for sat-nav - CV31 3EB.

## Features

No Onward Chain

Close To Town

Walking Distance of Town Centre & Train Station

Open Plan Living

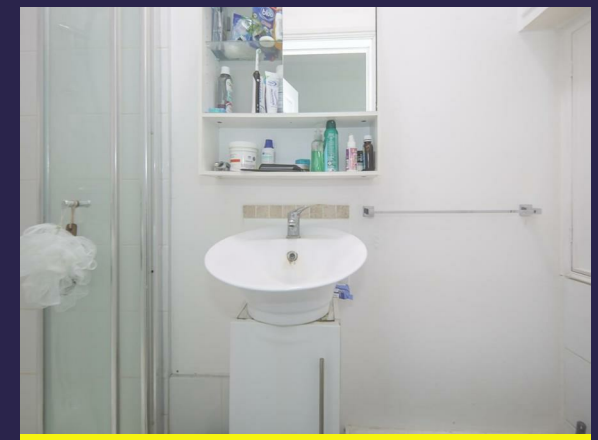
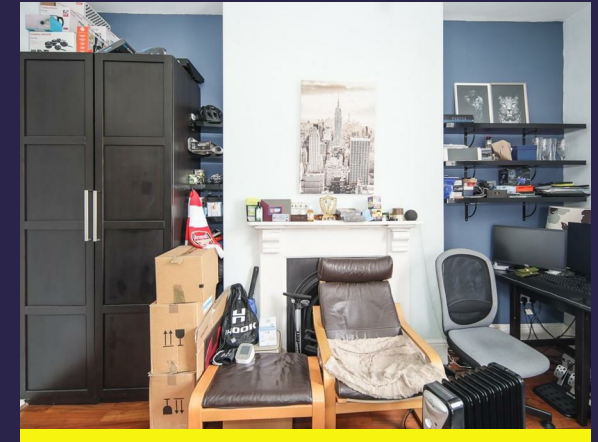
First Floor

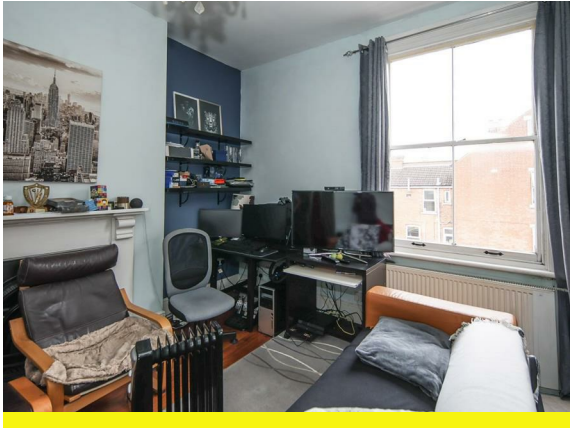
Off Street Parking

Gas Central Heating

Loft Access For Storage

Attractive Period Features





## Floorplan



## General Information

### Tenure

Leasehold

### Fixtures & Fittings

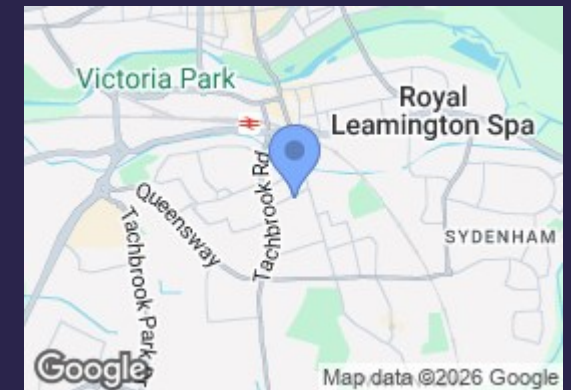
Specifically excluded unless mentioned in these sales particulars.

### Services

We understand that mains water, gas, electricity and drainage are connected to the property. We have not carried out any form of testing of appliances, central heating or other services and prospective purchasers must satisfy themselves as to their condition and efficiency.

### Council Tax

Band A - Warwick District Council



### Energy Efficiency Rating

|   | Current                 | Potential |
|---|-------------------------|-----------|
| Very energy efficient - lower running costs |                         |           |
| (92 plus) <b>A</b>                          |                         |           |
| (81-91) <b>B</b>                            |                         |           |
| (69-80) <b>C</b>                            |                         |           |
| (55-68) <b>D</b>                            |                         | 69        |
| (39-54) <b>E</b>                            | 54                      |           |
| (21-38) <b>F</b>                            |                         |           |
| (1-20) <b>G</b>                             |                         |           |
| Not energy efficient - higher running costs |                         |           |
| <b>England &amp; Wales</b>                  | EU Directive 2002/91/EC |           |

## Contact us

01926 888998

leamington@wiglesworth.com

## Visit us

14 Euston Place, Leamington Spa,  
Warwickshire, CV32 4LY

wiglesworth.com